



PANDUAN PENGGUNAAN UnisZA LIBPROXY

LANGKAH 1

■ Pada laman utama Portal Perpustakaan UnisZA, sila masukkan alamat e-mel UnisZA dan kata laluan pengguna.

Contoh:

Alamat e-mel UnisZA: [pelajar \(matric@putra.unisza.edu.my\)](mailto:pelajar@putra.unisza.edu.my)
[staf \(id@unisza.edu.my\)](mailto:staf@unisza.edu.my)

Kata Laluan: [kata laluan pengguna](#)

■ Klik 'Login'



The screenshot shows the library website interface with several sections:

- FOKUS:** A row of six icons representing library services: KEAHLIAN PERPUSTAKAAN, BACAIMANA? MANUAL, PANGKALAN DATA E-BUKU E-JURNAL, CARIAN BUKU | BAHAN PERPUSTAKAAN, CARIAN KERTAS PEPERIKSAAN KERTAS PERSIDANGAN, and PANDUAN PENYELIDIK.
- WAKTU PERKHIDMATAN:** A table showing library hours for three campuses:

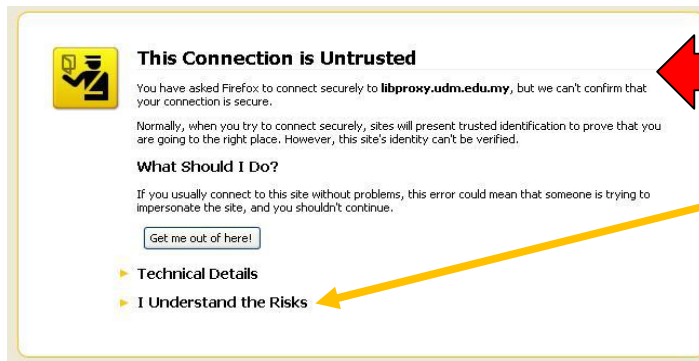
KAMPUS GONG BADAK
Ahad – Rabu 9.00 am – 10.00 pm
Khamis 9.00 am – 6.00 pm
Sabtu 9.00 am – 4.30 pm
KAMPUS KOTA
Ahad – Khamis 8.30 am – 6.00 pm
KAMPUS TEMBILA
Ahad – Khamis 9.00 am – 6.00 pm
- BORANG PENILAIAN PANGKALAN DATA PERCUBAAN:** A yellow banner for an evaluation form, mentioning OECDiLibrary and IEEE Xplore - Conference Alerts.
- BERITA PERPUSTAKAAN:** A section with two news items: 'Aplikasikan Konsep Iqra' Dalam Kehidupan' (13 November 2013) and 'Bengkel Jurnal Terindeks dan Berimpak Tinggi' (06 Mac 2013).
- RUJUKAN CEPAT:** A list of quick links to various online resources like Biography.com, Encyclopaedia.com, and Wikipedia, with search engine icons below.
- LIBPROXY:** A section for digital collection access from off-campus, featuring a login form with fields for 'E-mel UnisZA:', 'Kata Laluan:', and a 'Login' button. Yellow arrows point to these fields.
- LOGIN PORTAL STAF | PELAJAR:** A separate login form at the bottom with fields for 'E-mel Login', 'Kata Laluan', and a dropdown menu for 'Portal Staf'.



Nota:

Sekiranya 'Untrusted Connection' terpapar, pergi ke **Langkah 2**

Sekiranya tiada, terus ke **Langkah 3**

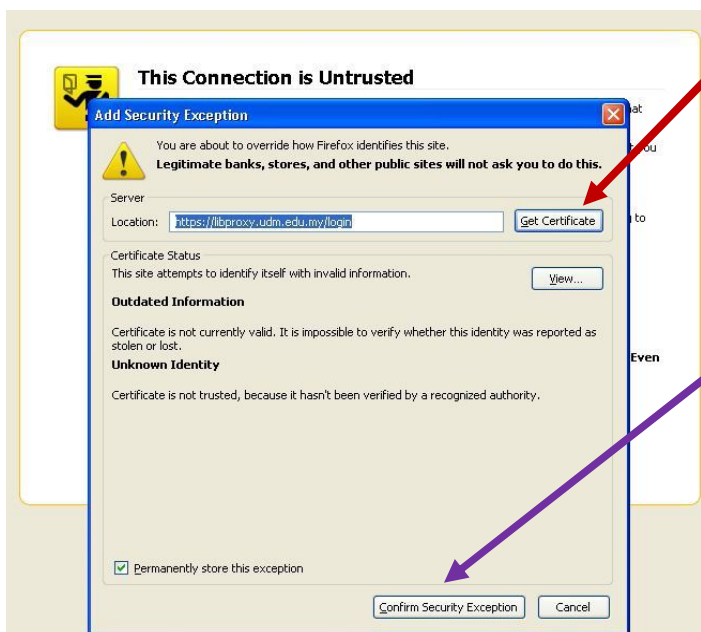
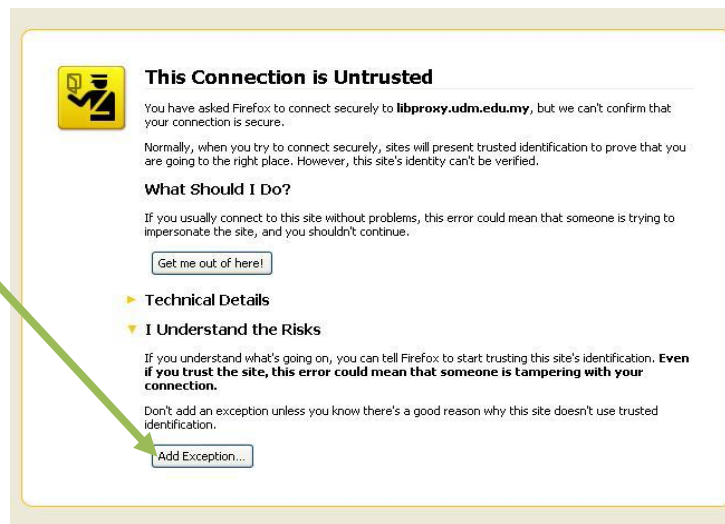


LANGKAH



■ Klik 'I Understand the Risks'

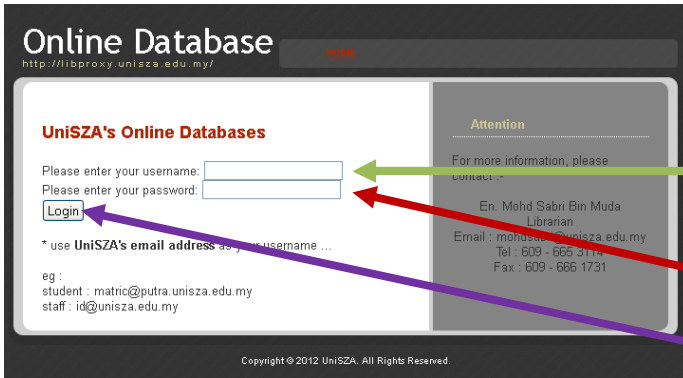
■ Klik 'Add Exception'.



■ Klik 'Get Certificate.'

■ Klik 'Confirm Security Exception'


LANGKAH 3



- Sila masukkan alamat e-mel UniZA dan kata laluan pengguna.

Contoh:

Username:
 pelajar (matric@putra.unisza.edu.my)
 staf (id@unisza.edu.my)

Password: kata laluan pengguna

- Klik 'Login'






LANGKAH 4

- Pengguna boleh terus mengakses koleksi digital.
- Proses tamat.

PANGKALAN DATA PERCUBAAN

Nama Pangkalan Data Percubaan	Perkara	Tarikh Tamat	Panduan
MEDLINE with Full Text	-	05.06.2012	-
Nursing Reference Center	-	05.06.2012	-
Scientific	-	05.06.2012	-

BUKU ELEKTRONIK

Bil.	Nama Buku Elektronik	Perkara	Jenis
1	 ebrary	Buku Elektronik yang merangkumi pelbagai bidang	Teks Penuh
2		Buku Elektronik yang merangkumi pelbagai bidang Panduan: 1. Klik <i>EBSCOhost Research Databases</i> 2. <i>Tandakan (1)</i> pada petak 'ebook collection' 3. Klik 'continue'	Teks Penuh
3	 PlantSCIENCEnetBASE	Buku Elektronik yang merangkumi bidang sains pertanian	Teks Penuh
4	 Brill Online	Agama dan Sains Sosial The Brill Dictionary of Religion Encyclopaedia of the Quran Encyclopaedia of Arabic Language and Literature	Teks Penuh